



**PAYS DE  
SELTZ-LAUTERBOURG**  
OFFICE DE TOURISME

# TOURIST GUIDE



[www.tourisme-pays-seltz-lauterbourg.fr](http://www.tourisme-pays-seltz-lauterbourg.fr)



Also  ce



Keep abreast of the news  
in the Pays de  
Seltz-Lauterbourg

# THE TERRITORY



**PAYS DE SELTZ-LAUTERBOURG**  
OFFICE DE TOURISME



## LEGEND

Cycle track

Water sports

Railway

Beach

Tourist Information Office

PAMINA Rhine Park

Nature reserve

Memorial

Horseback riding

Airport

A link with Germany, the Pays de Seltz-Lauterbourg, bordered by the Rhine, can be found in the far north-east of France and covers nineteen municipalities.

It invites visitors to come and explore towns and villages rich in history, picturesque countrysides, a peaceful environment and wonders of nature intimately connected to the Rhine.

Nature and sports enthusiasts are more than catered for: fishing, cycling, hiking, horse riding ...



**PAYS DE SELTZ-LAUTERBOURG**  
OFFICE DE TOURISME

**THE TERRITORY**

**Make your dreams come true!**  
**Le Pays de Seltz - Lauterbourg**

*Welcomes you*



## Contents

100% nature **02-07**

Sports and leisure activities **08-13**

A touch of culture & heritage **14-19**

Pamina Rhine Park **20-22**

Highlights **23**

Practical information

- Publication manager:  
Office de Tourisme Pays Seltz-Lauterbourg - 2019
- Print: Bizz design
- Graphic design: BBCC
- Non-contractual documentation
- Copyright: Christophe Stempffer  
Im'Art - Magali Savio - Naegele - Adean/Ora  
Office de tourisme Pays Seltz-Lauterbourg  
Matzke - Creutz - HDR - Adean/C.Fleckinger

*At your disposal*

### **In SELTZ**

*2 avenue Général Schneider*

*June to August:*

*Monday to Friday  
from 9.30am to 12.30pm*

*September to May:*

*Monday to Thursday and Saturday  
from 9-12am & 13.30-17.30pm.*

*At the cable ferry*

*June to August:*

*Monday to Friday  
from 14-18pm*

### **In MOTHERN**

*Maison de la Wacht 7 rue Kabach*

*mid-May to August:*

*Monday to Friday  
from 14-18pm*

*September to mid-May:*

*Monday to Friday  
from 13.30-17.30pm*

### **In LAUTERBOURG**

*Hôtel de Ville*

*21 rue de la 1<sup>ère</sup> Armée*

*mid-May to August:*

*Monday to Friday  
from 9.30am-12.30pm & 14-18pm*

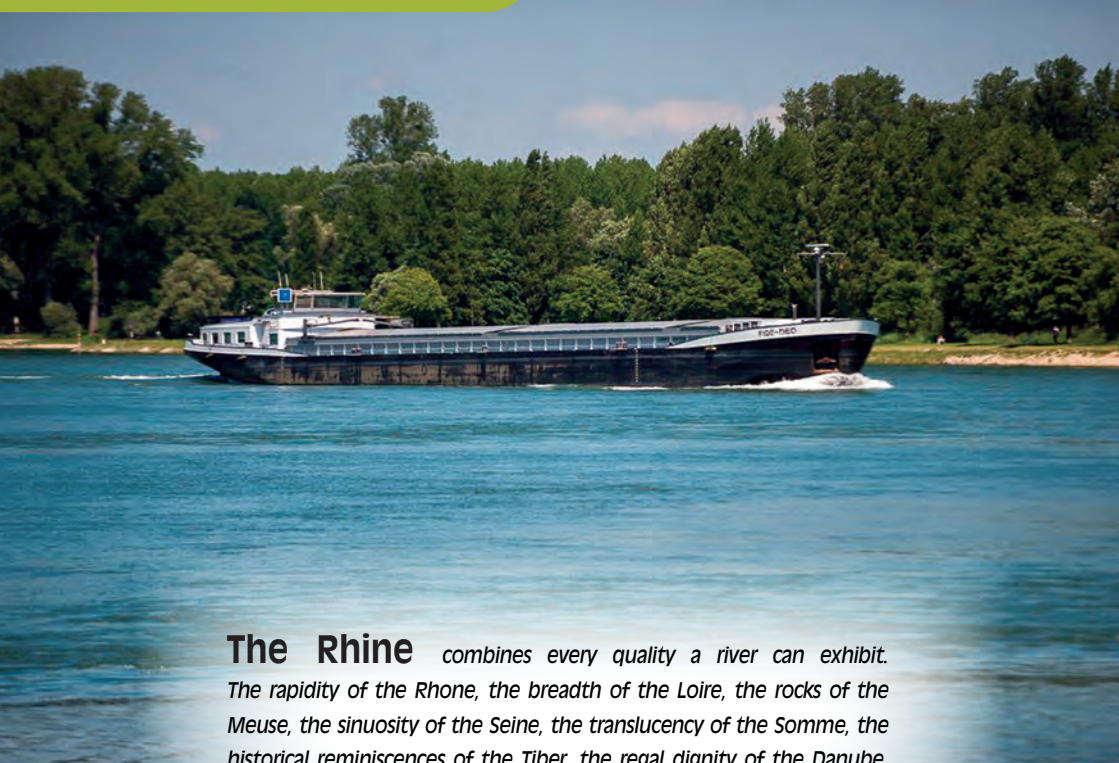
*Saturday 9.30am-12.30pm*

*September to mid-May:*

*Monday to Friday from 9-12am*

*Tel. +33 (0)3 88 05 59 79*

*info@tourisme-seltzlauterbourg.fr*



**The Rhine** *combines every quality a river can exhibit. The rapidity of the Rhone, the breadth of the Loire, the rocks of the Meuse, the sinuosity of the Seine, the translucency of the Somme, the historical reminiscences of the Tiber, the regal dignity of the Danube, the mysterious influence of the Nile, the golden sands of the the New World's glittering streams, the phantoms of some Asiatic stream»*  
Victor Hugo.

The Rhine flows a distance of 1,233 km from its source in the Alps, alongside the St Gotthard mountains in Switzerland, before reaching the North Sea. It crosses 180 km of the Alsace Plain between Huningue and Lauterbourg and marks the natural border between France and Germany.

After the locks in Iffezheim, it is free-flowing to its mouth in the North Sea. Its banks are therefore subject to fluctuations in water levels caused by melt-water or heavy rainfall.

This section of the Rhine has not changed since the stream flow was regulated by the construction of embankments that delimit the flood plain. As you walk along the corrective dyke, and depending on the water level, you can see the groynes, mounds of rockfill that form dykes stretching out at right

angles into the Rhine. The job of these groynes is to increase the length of the navigable channel and thus provides merchant vessels with sufficient water depth in all weathers. The Rhine, the lungs of the European economy, is a fluvial highway on which 320 million tonnes of goods transit every year, relieving congestion on the road network; daily traffic on our section is approximately 110 vessels carrying approximately 100,000 tonnes of very diverse cargos: cereals and products from the metalworking industry, as well as fertilisers, gravel, timber, oil products, chemical products, and so on.

The considerable development of river-borne tourism also means that any number of cruise and pleasure craft plies the waterway.



*In our area, you can choose from three ways  
of crossing the Rhine.*

**The cable ferry " Saletio" to Seltz** is the only one of its kind. A 20-meter-high cable system connects the ferry to both banks. It has an on-board source of electricity production using solar panels and water wheels. This system makes it possible to cross the Rhine using only the motive force of the current.

It can carry 70 passengers, 28 bicycles and up to 6 cars outside of the rush hours. It is free and designed for easy access for disabled people.

**Timetable:**

- From April 1 to September 30  
Monday to Friday 6-8pm  
Saturday, Sunday and Bank Holidays  
6.30am-10pm
- From October 1 to March 31  
Monday to Friday 6am-8pm  
Saturday, Sunday and Bank Holidays  
7am-8pm



**The Rhine bridge in Beinheim** dating from 1895, is a massive construction in stone and metal, in the Neo-Renaissance style. Once a railway bridge and now a road bridge, it was destroyed on two separate occasions during the Second World War.

**The Iffezheim Dam on the D4** the tenth and final Franco-German development on the Rhine, the Iffezheim dam and its various constructions were completed and commissioned in 1977.

# 100% NATURE

## The nature reserve of the delta of the Sauer

Very close to the Rhine, the Sauer Delta National Nature Reserve is managed by the Alsatian Nature Conservancy Council (Conservatoire des Sites Alsaciens). Situated at the point where the Sauer joins the Rhine, between Seltz and Munchhausen, the nature reserve offers a rich and diverse mosaic of natural environments in the Rhineland. Covering a surface area of 486 hectares, including a meander in the former main stem of the Rhine, the nature reserve is subject to fluctuations in water levels.

When flooding occurs, the river spreads over the entire site and mudbanks, with their slew of bird-life, appear when the waters recede.

### On land there are:

- A mix of forest sites showing the different evolution's stages of the alluvial forest environment from fast growing pioneer forests of soft wood made up mainly of white willow, to the terminal hard wood forest made up of oak pedunculata, ash and elm
- plantations of hybrid poplars
- meadows, mainly in the Grosswoerth, where big reed beds cover the most humid ground

### Aquatic areas:

- The Sauer and its different branches more or less connected to each other depending on the water level.
- Gravel pits excavated more recently.



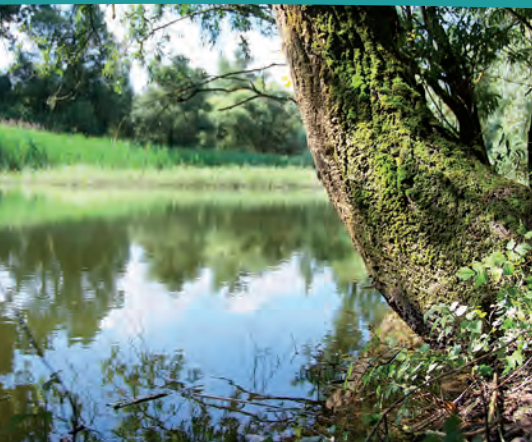
These different natural habitats are hosts to rich and varied flora and fauna with a survey revealing 400 different plants, 182 types of bird, 34 varieties of dragon fly, and 20 types of fish. Surprise yourself exploring these different zones and their exceptional natural assets alone or with a guided tour organised by the site manager.



### For more Information:

**Conservatoire des Sites Alsaciens**  
**Antenne du Bas-Rhin**  
1 rue des Ecoles - 67850 Offendorf  
Tel. + 33 (0)3 89 83 34 10  
[www.conservatoire-sites-alsaciens.eu](http://www.conservatoire-sites-alsaciens.eu)

**CINE (Centre for the Introduction to Nature and the Environment)**  
2 route du Rhin - 67470 Munchhausen  
Tel. + 33 (0)3 88 86 51 67  
[www.nature-munchhausen.com](http://www.nature-munchhausen.com)  
[cin@nature-munchhausen.com](mailto:cin@nature-munchhausen.com)  
Opening: Monday to Friday  
9-12am & 2-6pm  
Visit to the center are free.  
Guided visits on demand.



## The shutter dam in Munchhausen

It is situated at the point where the Sauer joins the Rhine. It is a one-off construction in Europe as it is a flap gate that rests on the water outside flood periods. When raised vertically, it acts as a dyke during high water periods. The construction is 60 m long and 7 m high and it can be moved using hydraulic jacks, each with a thrust of 350 tonnes.



## The ornithological station in Munchhausen

The nature reserve site in Munchhausen is open to anyone who is curious about or interested in the practice of bird ringing.

Group outing for all ages (mid-July to the end of September) on request.

Contact: M. Paul Koenig  
Tel. + 33 (0)6 83 83 28 31 56  
paulantoinekoenig@yahoo.fr

100% NATURE



# The Forest

A number of forests enhance the area's landscape. Some, like the alluvial forests of Seltz, Niederroedern and Hôpital in Kesseldorf occupied a significant place in Roman and Celtic culture. Others, like the Rhineland forests of Beinheim, Seltz, Munchhausen, Mothern and Lauterbourg enjoy exceptional biodiversity with one emblematic tree: the cropped willow. Pruned regularly, it once provided the raw material used to make shoes, baskets and fish pots. Some lovely specimens can be seen in Beinheim and Mothern, and in the Sauer Delta Nature Reserve.







The forests of Niederlauterbach and Salmbach form part of the Lauter Natura 2000 site. Listed by the European Union as a site of remarkable biodiversity, it extends over nearly 2,000 hectares and across six communes between Wissembourg and Lauterbourg. It is characterised by some very interesting habitats (River Lauter, wetland forests, meadows and marshland) and includes several animal and plant species that the European Union is keen to see conserved: fish, bats, butterflies, dragonflies, remarkable oaks... To enable people to explore these natural wonders, an educational nature trail, which crosses the Bruchwald (forest of Salmbach and Niederlauterbach) has been laid out.



# SPORTS AND LEISURE ACTIVITIES

A wide range of leisure and other outdoor activities is available. You will find the equipment, advice and supervision to try out various sports in complete safety. Fitness fans will find their heart's desire on:



## The Bike Trails

You will fall under the spell of our region's beauty as you pedal along in complete peace, at your own pace, to the accompaniment of birdsong, through forests, still unspoilt landscapes, protected sites, fields, grassland as far as the eye can see...

The Pays de Seltz-Lauterbourg can provide you with suitable accommodation, rental and repair services, detailed maps of the bike trails...



Some quite remarkable itineraries criss-cross our region.

- **The Rhine Cycle Route - Eurovelo15**

*From the source of the Rhine to its mouth in the North Sea*

[www.rhinecyclerroute.eu](http://www.rhinecyclerroute.eu)

- **The Lauter Valley Cycle Route**

*The cross-border itinerary to get to Dahn (D), passing through Wissembourg, which joins up with the EuroVelo 15 Rhine Cycle Route in Lauterbourg.*

[www.cyclinginalsace.com](http://www.cyclinginalsace.com)

- **«Between the Rhine, Sauer and Lauter»**

*This itinerary promises varied landscapes and a breathtaking view over the Northern Vosges and the Black Forest.*

[www.pamina-region.info/ER5](http://www.pamina-region.info/ER5)

- **Cross-border itineraries to the Rhine Park**

[www.parc-rhenan.org](http://www.parc-rhenan.org)

*Each one of these trails can be downloaded on your GPS or smartphone using a mobile application.*

### Bicycle rental / repair

Cycle Wurtz

ZAC le Parc Rhénan in Seltz

Tel. + 33 (0)3 88 86 88 57

[pascalwurtz.sarl@wanadoo.fr](mailto:pascalwurtz.sarl@wanadoo.fr)

### Bicycle repair

Atelier du cycle

1 rue Blond in Niederroedern

Tel. + 33 (0)3 88 05 38 95

[contact@atelierducycle.fr](mailto:contact@atelierducycle.fr)

### Cycle moto Pflug

4 rue Principale in Niederlauterbach

Tel. + 33 (0)3 88 53 68 21

## By bike in the Rhine Park

### Legende / Légende

-  Museum/Musée
-  Naturschutzzentrum/C.I.N.E.
-  Parkplatz/Parking
-  Radwanderweg Rheinauen/  
Parcours cyclable « Plaine  
Rhénane »



## SPORTS AND LEISURE ACTIVITIES

## Hiking and Nature Outings



### Fitness trails

The fitness trail in Lauterbourg (close to the Plage des Mouettes) offers 15 apparatuses on a distance of 1.7 km and the one in Seltz is 2 km long through a forest setting and offers 22 apparatuses (near the Sports Complex in the avenue du Général De Gaulle). They are available all year.

### Another Way to Explore our Region

**Horseback riding** in all of its forms: Outings on horseback or on ponies, in a horse-drawn carts or expeditions lasting several days.

- Riding school of the Haras de la Née route de Mothern in Néewiller près Lauterbourg  
Tel. +33 (0)6 61 70 42 53 / +33 (0)3 88 54 60 72  
[www.haras-de-la-nee.com](http://www.haras-de-la-nee.com)

- Pony club  
1 chemin du Vieux Moulin in Schaffhouse près Seltz  
Tel. +33 (0)6 82 52 29 42 / +33 (0)6 30 83 99 25  
[poneyclub67@gmail.com](mailto:poneyclub67@gmail.com)

- Pony club des Ecureuils  
7a route de Wintzenbach in Niederroedern  
Tel. +33 (0)6 09 04 72 52  
[pc.ecureuils@yahoo.fr](mailto:pc.ecureuils@yahoo.fr)



Apart from the GR 53, which crosses the entire Northern Vosges from Lauterbourg, hiking enthusiasts can also take advantage of twenty or so other trails signposted by the Club Vosgien, some of which are interconnected. Each trail takes you through different landscapes (Rhine, forest, protected sites, Ried, plain, orchards...), allowing to get some fresh air and discover the riches of our pretty corner of the world.

Interpretive and thematic discoveries' trails give young and old visitors a glimpse of the curiosities and attractions of the PAMINA Rhine Park.



Nature guides can accompany your outings

- The CSA Tel. +33 (0)3 89 83 34 10
- The CINE Tel. +33 (0)3 88 86 51 67
- The ornitological station Tel. +33 (0)6 83 28 31 56





## A Toe in the Water...

Fishing, a leisure activity in which everyone can satisfy a desire, seek escape or simply leave all their stresses behind them to enjoy a moment of bliss. Our region is a delight for angling fans, whether line, livebait, metal lure, dead bait, English-style or fly fishing.... provided that you have your fishing permit.



## Sale fishing card

### Daily card

- *Tabac-presse Lauter*  
28 rue Principale in Seltz  
Tel. +33 (0)3 88 86 55 73  
Opening:  
Monday to Friday 6-12am & 1-6.30pm  
Wednesday 6-11.30am  
Saturday 6-12am & 1-4pm  
Sunday 7-12am

### Daily and weekly card

- *Maison de la Presse Fetsch*  
5 rue de la 1<sup>ère</sup> Armée in Lauterbourg  
Tel. +33 (0)3 88 94 80 13  
Opening: Monday 2-7pm  
Tuesday to Friday 8-12am & 2-7pm  
Saturday 8am-5pm  
Sunday 9.30-11am

## Fly fishing

The stretch of water in Seltz, which covers 2.5 hectares, provides an exceptional setting for fly-fishing in front of the campsite. It is stocked with fario, lake and rainbow trouts and

provides quality fishing at a very reasonable price from mid September to the end of June. **The fishing card is issued by a vending machine on site.**

## SPORTS AND LEISURE ACTIVITIES

# Water sports centre in Lauterbourg



A dynamic and competent team welcomes you to the water sports centre. A broad range of nautical activities is offered by a state-registered instructor. You will find up-to-date facilities, advice and supervision to take part in these sports in complete safety. All days from mid-April to mid-October from 10.30am to 7pm.

The water sports centre has catamarans, sailing dinghies, windsurfing boards, canoes and kayaks, and paddleboards at its disposal.  
Tel. +33 (0)3 88 54 61 45 / +33 (0)3 88 94 80 32  
[mjclauter@free.fr](mailto:mjclauter@free.fr)



## Swimming

Fans of relaxation and lazing around will enjoy lounging in the sunshine between two dips in the water during the summer season. (Supervised swimming)

- in Beinheim au plan d'eau de la Chapelle

Or on fine sand beaches

- in Lauterbourg "les Mouettes"
- in Seltz «les Peupliers» et la plage du centre de plein air - [www.campings-seltz.fr](http://www.campings-seltz.fr)





# Fun for all the family

- **An original way to explore the landscapes of the Rhineland.**

Ply the Rhine on a jet ski accompanied by an instructor. Outings on quad bikes with trails suitable for all levels of experience or crank up the adrenalin with a paintball fight.

Tél. +33 (0)6 60 06 59 42

[www.nature-sports-evasion.com](http://www.nature-sports-evasion.com)

- **1 park 2 activities.**

Slides with descents by inner tube or sledge, going over a spring board to propel you into the air, before landing in the water, or a combination of inflatable modules for climbing, jumping, diving, sliding, etc., all set up on the water in order to enjoy yourself in complete safety. A fun way to get some summer exercise for all the family.

**Plage des Mouettes - Lauterbourg**

Tél. +33 (0)7 89 65 76 29 / [www.total-jump.fr](http://www.total-jump.fr)

- **A ludic course** of about 2 km in Lauterbourg (adapted for children from 4 to 12). It will help you to discover the city through its streets on a trail punctuated with enigmas.



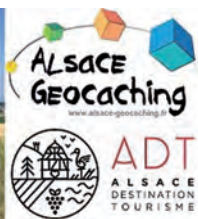
- Discovering **farmyard animals** at the bird centre in Beinheim or around the campsite «Les Peupliers» in Seltz

- You will find **play areas** and **sports complexes** throughout the region to keep the youngsters happy.



- **Geocaching**, a fun way to explore our region. A high-tech treasure hunt that, with the help of their smartphone, takes «geocachers» from one stage to the next, based on GPS coordinates and riddles that have to be solved, to reach the ultimate goal: discovery of the «cache».

You can choose from three different trails. Logbook available at the Tourist Information Office or download it.



## A TOUCH OF CULTURE & HERITAGE



# CULTURE

## The Wacht House in Mothern

houses the permanent exhibition «Once upon a time was the Rhine» and is intended to tell the story of the Rhine in space and time. Visitors can learn about the river, from source to delta, through stories, legends, tales and poems that so wonderfully reflect history beside the river.

7 rue du Kabach

Tel. +33 (0)3 88 05 59 79 / +33 (0)3 88 54 60 22

Opening hours identical to those of the Tourist Information Office

All 1st Sundays of every month 2-5pm

Closed in January and Bank Holidays

Entrance: 1€/pers.



## The House Krumacker - Historical and cultural center in Seltz

The exhibition takes you on an enjoyable stroll through time, from the Celts and the Romans until the age of the Empress Adelaide, who lived in Seltz in the year around 1000. You can also see a magnificent Celtic sword in bronze, discovered in the area, as well as objects from Roman times found during digs. The Museum is part of the PAMINA Rhine Park.

2 avenue Général Schneider

Tel. +33 (0)3 88 05 59 79

Opening hours identical to those of the Tourist Information Office or on appointment.

Guided visits on demand. Entrance: 1€/pers



## The film club

The film club is based in the north-east wing of Lauterbourg community hall – 4 Allée des Cygnes. A proper movie theatre with comfortable seats invites you to catch up with recent releases twice a month on Saturdays at 5pm and 8pm, with lectures on particular themes... or even open-air showings in the summer season.

**More information:**

[www.tourisme-pays-seltz-lauterbourg.fr](http://www.tourisme-pays-seltz-lauterbourg.fr)

## Beekeepers

What do we know about bees? How do they live? How many worker bees, queens and drones are there in a hive? What is the role of each of them in the hive? How do they grow up? What are the different products of the hive other than honey? What use are they to the bees? What use are they to us? ... A lot of questions that the beekeeper will answer with enthusiasm.

**Guided visits on demand:**

• **Rucher Ecole**  
contact M. Wollenschlaeger

Tel. +33 (0)6 07 13 60 29

• **Miellerie**

contact M. Burckhardt

Tel. +33 (0)6 87 24 72 19

### • **Library of Lauterbourg**

*Place du Château*

Tel. +33 (0)3 88 94 81 52

*lauterbib@wanadoo.fr*

*Opening:*

*Monday, Wednesday & Thursday 3.30-5pm*

*Tuesday & Friday 5.30-7pm*

*Sunday 11-12am*

*Other libraries in the region are open to bibliophiles.*

### • **Multimedia library of Seltz**

*2 avenue Général Schneider*

Tel. +33 (0)3 88 05 59 39

*mediatheque@ville-seltz.fr*

*www.mediatheque.seltz.fr*

*Opening: Tuesday 2.30-5.30pm*

*Wednesday 9-12am & 2-5.30pm*

*Friday 2-6.30pm*

*Saturday 9.30am-12.30pm*

### • **Artistic culture with Sur les Sentiers du Théâtre**

*3 rue Principale à Beinheim*

Tel. +33 (0)3 88 72 09 83

Tel. +33 (0)6 22 19 58 63

*www.surlessentiersduthatre.com*



## A TOUCH OF CULTURE & HERITAGE



### The nature initiation centre

Comprising professional naturalists and volunteer nature guides, the Nature Centre has been endorsed as a "Centre for the Introduction to the Nature and the Environment" (CINE). In addition to its educational work with school children, it also works with the general public to introduce them to the countless riches of the landscape and the flora and fauna to be found in its territory.

From the Northern Vosges to the Rhine, from Le Bienwald to the outskirts of Strasbourg, the Nature Centre is your guide to information on and exploration of the living world that surrounds us.

Visits to the centre are free.

Guided visits on demand.

CINE (Centre d'Initiation à la Nature  
et à l'Environnement)

2 route du Rhin

Tel. +33 (0)3 88 86 51 67

[www.nature-munchhausen.com](http://www.nature-munchhausen.com)

[cin@nature-munchhausen.com](mailto:cin@nature-munchhausen.com)

Opening: Monday to Friday 9-12am & 2-6pm





# Heritage

*Each village in our region unveils its charms to visitors with its beautiful half-timbered houses and stunning floral displays.*

*Discover a quite particular heritage.*

## In Beinheim

**The Schramm garden and the Ephemera garden**, Landscape areas where art and nature come together and the visitor can stroll around, relax and recharge his or her batteries.

## In Mothern

- **The Boatmen's Mast**, an imposing monument that lords it over the Place de la Wacht, reminding us of the important economic role of the Rhine.

- **The "Grotte de Lourdes"** situated on the road that leads to Néewiller près Lauterbourg

## In Munchhausen

- **The Saint Pantaleon Church** dates from 1840. It is in the Italian Renaissance style. It houses copies of a number of Italian works (paintings, sculptures, stained glass decorations, coffered ceiling).

## In Niederroedern

- **The nativehouse of Frédérique Brion**, (1752-1813). It can be found at 26 rue de la Haute Vienne. The village pastor's daughter was Goethe's muse, but that love story was short-lived.



# A TOUCH OF CULTURE & HERITAGE

## In Lauterbourg

«**Gateway to France**» Town. *On visit free or guided on demand in the tourist office.*

- **The Landau Gateway (1708)**, that bears witness to the Vauban epoch, is built on mediaeval fortifications. A small museum area, that can be visited only during guided tours, has been laid out on the first floor and includes a model of the fortifications, based on drawings dating from 1782.

- **The «Butchers Tower»**, is the unique tower rescued among the fifteen towers of the medieval surrounding wall.

- **The townhall (1731)** with remarkable architecture, includes a magnificent Renaissance gateway.

- **The majestic Sainte Trinité Church** with its mediaeval bell tower, its gothic choir from 1647, its pulpit (1581) fashioned straight out of the sandstone and its Stieffel organ (1777) is listed as an historic monument.

- **The Protestant Church «Powder Church»**, a former powder magazine from 1708, converted into a place of worship, was consecrated in 1888



- **The Adam House**, a building from the Louis XV period, the Bailiff House and the Former Episcopal Residence are also worth going to see.

- **The fish ladder** located in a verdant setting, is made up of 10 basins and is helping to re-establish the ecosystem of the Lauter, the 39-km long river that marks the border (on the French side) and a tributary of the Rhine.



*The Landau Gateway*



## In Seltz

- **The church Saint Etienne** links the former gothic choir with the high altar dating from the 15th century. The building as a whole is listed as an historic monument.



Church Saint Etienne

- **The townhall** with its bell turret, rises over the Place de la Mairie and is set amongst a number of very lovely farm buildings.



The townhall - Seltz

## In Scheibenhart

- **The stele commemorating** March 19th, 1945 reminds us of the 4th Tunisian Infantry Regiment, which battled its way over the Lauter. It was the first French army unit to advance into Germany.

## In Néewiller près Lauterbourg

- **The Chapel of Saint Antoine**, a place of pilgrimage for a fair number of gypsies and gadjé, in the second weekend in June.

Although every village has its bell tower, those interested in religious heritage can visit a number of chapels, such as:

- Saint Vitus Chapel in Beinheim
- The Chapel Notre de Dame de Lourdes in Salmbach
- The Chapel Notre Dame de la Visitation in Kaidenbourg
- The Chapel Notre Dame du Chêne in Niederlauterbach
- The Chapel Notre Dame du Bon Secours in Lauterbourg

Places conducive to contemplation.



## In Wintzenbach

- **The war memorial**, is situated beside the Catholic Church, depicting a French Soldier and a German soldier reunited in the arms of their Alsatian mother. It symbolises the history of the two World Wars and the rifts in Alsace Lorraine.

## PAMINA RHINE PARK CROSS-BORDER



*Museum - Neuburg (D)*

Located on the banks of the Rhine, the PAMINA Rhine Park is a cross-border area, which covers the largest stretch of interconnected alluvial plains in Europe. It takes in 34 territorial municipalities and local authorities, including 11 on the French bank, and covers 850 km<sup>2</sup> from Leimersheim (D) / Eggenstein-Leopoldshafen (D) in the north to Drusenheim (F) / Rheinmünster-Greffern (D) in the south. The Rhine, which has shaped the local inhabitants as well as the landscape on either side of the border, is the project's common denominator.

**The ten museums** form a veritable network of exhibits, constituting the project's backbone (anchorage points). Ecological realities, historic, social and cultural past, every aspect of life alongside the river is presented in the various museums in the Park.

**The Nature and Environmental Interpretation Centres** in Munchhausen (F) and Karlsruhe-Rappenwört (D) are the highlights as regards protecting nature, the environment and the natural heritage. The PAMINA Rhine Park is set in a typical alluvial landscape some quite exceptional flora and fauna.

The various sites in the Park are interconnected by a large network of cycle tracks, which skirt



*Hardt Museum - Durmersheim (D)*

the protected areas of the alluvial plain. The trail is a delight for those scouring the heart of the PAMINA Rhine Park for a haven of peace, but without giving up on exercising. The peaceful atmosphere of the Rhine backwaters is an invitation to dawdle, looking for peace and quiet to observe the natural world without, however, detriment to the inhabitants of the protected environment such as nesting birds, amphibians and insects. Cycling on this trail is a real delight!  
**Total distance of the trail: approximately 130 km.**



Ried Museum - Rastatt-Ottersdorf (D)



# PAMINA RHINE PARK CROSS-BORDER



Museum Elchesheim-Illingen (D)

**More than sixty stations alongside the route**, set up around the cycle tracks, showcase the region's curiosities and the noteworthy sites in the Rhine Park. Interesting explanatory panels punctuate the cycle tracks, inviting cyclists to take an educational break. The themes discussed vary considerably and underline the ecological or historic importance of each site.

**A selection of «discovery and interpretation trails»** invites ramblers and hikers to explore some extraordinary Rhine landscapes at the heart of the PAMINA Rhine Park cross-border area and to discover the diversity and charm of its protected landscapes and unspoilt nature.

**Four Rhine ferries** linking the towns of Leimersheim and Eggenstein-Leopoldshafen, Neuburg and Neuburgweier, Seltz and Plittersdorf, Drusenheim and Greffern, enable cyclists and ramblers to cross the Rhine to get to the other bank.



## ***Would you like to explore a specific aspect of the Rhine Park?***

*...Then come and get to know our guides, who will share their knowledge of the region and use their understanding of the land to help visitors. The guides at the Park are qualified assistants who arrange guided tours to suit your needs, tastes and specific interests. Those with an exceptional knowledge of the region are adept at organising hikes, bike trips or bus tours that lift the veil on the secrets of the alluvial landscapes. A guided tour is the perfect complement for everyone: whether you come as part of a group or on your own.*

**More information: [www.parc-rhenan.org](http://www.parc-rhenan.org)**



# HIGHLIGHTS

## Autumn:

- Heritage Day (3rd weekend of September)
- Saint Martin's Day in Lauterbourg (November 11)
- Fox hunting (1st weekend of November)



## Winter:

- Christmas events & market (last weekend of November & 3rd weekend of December in Seltz, 2nd weekend of December in Lauterbourg)
- Carnivals in Mothern, Lauterbourg & Seltz



## Spring:

- Easter events
- The Volkswagen gathering in Lauterbourg (May 1)
- Reggae Festival in Lauterbourg (2nd weekend of May)
- Bridge Festival in Scheibenhart (1st weekend of June)
- Haflinger horse fair (3rd weekend of June)



## Summer:

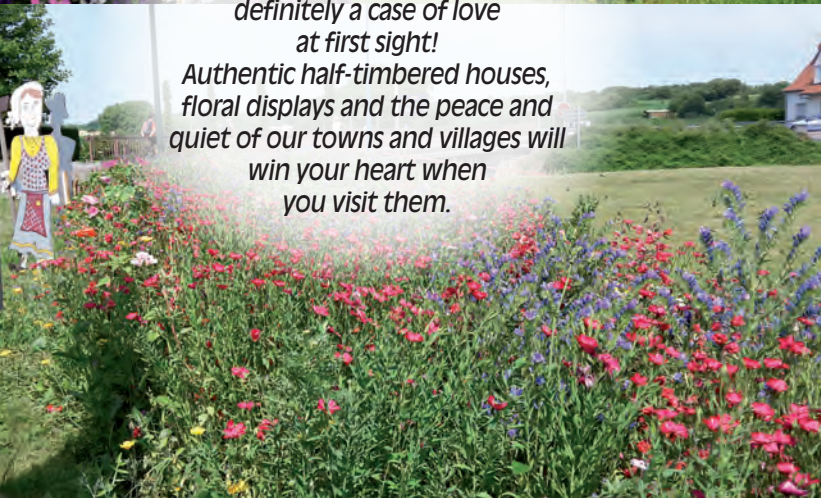
- World Music Day (June 21)
- Motocross championships (last weekend of June)
- National day (July 14)
- The "Lauterfescht" in Salmbach (1st weekend of August)
- Horse festival in Siegen (last Sunday of August)
- 4x4 Car Trial Championship in Seltz (end August)
- Electronic festival of music in Lauterbourg (1st weekend of September)





*Very colourful, our region is definitely a case of love at first sight!*

*Authentic half-timbered houses, floral displays and the peace and quiet of our towns and villages will win your heart when you visit them.*



*The know-how and quality of the work of our craftsmen and local producers add to the region's richness*



*Lovers of fine dining, whether professional or simply lovers of good food, the region perpetuates the tradition of fine cuisine full of flavour and bursting with local character.*

*You will find accommodation options to suit all tastes, from campsites to guest houses, from modern country cottages to cosy hotel rooms.*

*The welcome you are given and the sheer friendliness you will experience will be your partners during your stay.*



**PAYS DE  
SELTZ-LAUTERBOURG**  
OFFICE DE TOURISME

## PRATICAL INFORMATION

### TER Alsace - SNCF

Train line Strasbourg – Lauterbourg  
or Strasbourg - Lauterbourg - Wörth (D)  
[www.sncf.com](http://www.sncf.com)

### Bus Réseau67

Tel. + 33 (0)9 72 67 67 67

Bus line 313 Seltz - Wissembourg  
Bus line 314 Lauterbourg - Wissembourg  
Bus line 330 Seltz - Beinheim - Haguenuau

### Emergency

112

Police of Lauterbourg  
Tél. +33 (0)3 88 94 80 12

Police of Seltz  
Tél. +33 (0)3 88 86 50 12



**PAYS DE  
SELTZ-LAUTERBOURG**

OFFICE DE TOURISME

The Tourist Information Office is there to advise you, point you in the right direction ... Please feel free to contact us.

We'll be delighted to help you to explore  
**the Rhine Plain!**



[www.tourisme-pays-seltz-lauterbourg.fr](http://www.tourisme-pays-seltz-lauterbourg.fr)

